

## Test Report

No.: CANEC1501730313

Date: 13 Feb 2015

Page 1 of 18

KINGBOARD LAMINATES HOLDINGS LIMITED  
2/F., HARBOUR VIEW 1, NO. 12 SCIENCE PARK EAST AVENUE, PHASE II HONG KONG SCIENCE PARK,  
SHATIN, N.T., HONG KONG

The following sample(s) was/were submitted and identified on behalf of the clients as : KB-3151C

SGS Job No. : CP15-005068 - GZ  
Tested Sample Info. : KB-3151C  
Client Ref. Info. : KB-2150, KB-2151, KB-3151S, KB-3150N, KB-3151HS  
Date of Sample Received : 29 Jan 2015  
Testing Period : 29 Jan 2015 - 06 Feb 2015  
Test Requested : Selected test(s) as requested by client.  
Test Method : Please refer to next page(s).  
Test Results : Please refer to next page(s).

Conclusion: : Based on the performed tests on submitted sample(s), the results of Lead, Mercury, Cadmium, Hexavalent chromium, Polybrominated biphenyls (PBBs), Polybrominated diphenyl ethers (PBDEs) **comply with** the limits as set by RoHS Directive 2011/65/EU Annex II; recasting 2002/95/EC.

Signed for and on behalf of  
SGS-CSTC Standards Technical Services Co., Ltd. Guangzhou Branch



Almay Gao  
Approved Signatory



This document is issued by the Company subject to its General Conditions of Service printed overleaf, available on request or accessible at <http://www.sgs.com/en/Terms-and-Conditions.aspx> and, for electronic format documents, subject to Terms and Conditions for Electronic Documents at <http://www.sgs.com/en/Terms-and-Conditions/Terms-e-Documents.aspx>. Attention is drawn to the limitation of liability, indemnification and jurisdiction issues defined therein. Any holder of this document is advised that information contained hereon reflects the Company's findings at the time of its intervention only and within the limits of Client's instructions, if any. The Company's sole responsibility is to its Client and this document does not exonerate parties to a transaction from exercising all their rights and obligations under the transaction documents. This document cannot be reproduced except in full, without prior written approval of the Company. Any unauthorized alteration, forgery or falsification of the content or appearance of this document is unlawful and offenders may be prosecuted to the fullest extent of the law. Unless otherwise stated the results shown in this test report refer only to the sample(s) tested.

Attention: To check the authenticity of testing /inspection report & certificate, please contact us at telephone: (86-755) 8307 1443, or email: [CN.Doccheck@sgs.com](mailto:CN.Doccheck@sgs.com)

SGS-CSTC Standards Technical Services Co., Ltd.  
Guangzhou Branch / Testing Center / Chemical Laboratory

198 Kezhu Road, Sciencetech Park Guangzhou Economic & Technology Development District, Guangzhou, China 510663 t (86-20) 82155555 f (86-20) 82075113 www.sgsgroup.com.cn  
中国·广州·经济技术开发区科学城科珠路198号 邮编: 510663 t (86-20) 82155555 f (86-20) 82075113 e [sgs.china@sgs.com](mailto:sgs.china@sgs.com)

# Test Report

No.: CANEC1501730313

Date: 13 Feb 2015

Page 2 of 18

Test Results:

## Test Part Description:

Specimen No.	SGS Sample ID	Description
SN1	CAN15-017303.007	Yellow sheet(only test yellow part without red "KB"printing

Remarks:

- (1) 1mg/kg=1ppm=0.0001%
- (2) MDL = Method Detection Limit
- (3) ND = Not Detected (<MDL)
- (4) “-” = Not Regulated

## RoHS Directive 2011/65/EU

Test Method:

- (1) With reference to IEC 62321-5:2013, determination of Cadmium by ICP-OES.
- (2) With reference to IEC 62321-5:2013, determination of Lead by ICP-OES.
- (3) With reference to IEC 62321-4:2013, determination of Mercury by ICP-OES.
- (4) With reference to IEC 62321:2008, determination of Hexavalent Chromium by Colorimetric Method using UV-Vis.
- (5) With reference to IEC 62321:2008, determination of PBBs and PBDEs by GC-MS.

Test Item(s):	Limit	Unit	MDL	007
Cadmium (Cd)	100	mg/kg	2	ND
Lead (Pb)	1000	mg/kg	2	ND
Mercury (Hg)	1000	mg/kg	2	ND
Hexavalent Chromium (Cr(VI))	1000	mg/kg	2	ND
Sum of PBBs	1000	mg/kg	-	ND
Monobromobiphenyl	-	mg/kg	5	ND
Dibromobiphenyl	-	mg/kg	5	ND
Tribromobiphenyl	-	mg/kg	5	ND
Tetrabromobiphenyl	-	mg/kg	5	ND
Pentabromobiphenyl	-	mg/kg	5	ND
Hexabromobiphenyl	-	mg/kg	5	ND
Heptabromobiphenyl	-	mg/kg	5	ND
Octabromobiphenyl	-	mg/kg	5	ND
Nonabromobiphenyl	-	mg/kg	5	ND
Decabromobiphenyl	-	mg/kg	5	ND
Sum of PBDEs	1000	mg/kg	-	ND



This document is issued by the Company subject to its General Conditions of Service printed overleaf, available on request or accessible at <http://www.sgs.com/en/Terms-and-Conditions.aspx> and, for electronic format documents, subject to Terms and Conditions for Electronic Documents at <http://www.sgs.com/en/Terms-and-Conditions/Terms-e-Documents.aspx>. Attention is drawn to the limitation of liability, indemnification and jurisdiction issues defined therein. Any holder of this document is advised that information contained hereon reflects the Company's findings at the time of its intervention only and within the limits of Client's instructions, if any. The Company's sole responsibility is to its Client and this document does not exonerate parties to a transaction from exercising all their rights and obligations under the transaction documents. This document cannot be reproduced except in full, without prior written approval of the Company. Any unauthorized alteration, forgery or falsification of the content or appearance of this document is unlawful and offenders may be prosecuted to the fullest extent of the law. Unless otherwise stated the results shown in this test report refer only to the sample(s) tested.

Attention: To check the authenticity of testing /inspection report & certificate, please contact us at telephone: (86-755) 8307 1443, or email: [CN.Doccheck@sgs.com](mailto:CN.Doccheck@sgs.com)

SGS-CTC Standards Technical Services Co., Ltd.  
Guangzhou Branch / Testing Center / Chemical Laboratory

198 Kezhu Road, Sciencetech Park Guangzhou Economic & Technology Development District, Guangzhou, China 510663 t (86-20) 82155555 f (86-20) 82075113 www.sgsgroup.com.cn  
中国·广州·经济技术开发区科学城科珠路198号 邮编: 510663 t (86-20) 82155555 f (86-20) 82075113 e [sgs.china@sgs.com](mailto:sgs.china@sgs.com)

## Test Report

No.: CANEC1501730313

Date: 13 Feb 2015

Page 3 of 18

Monobromodiphenyl ether	-	mg/kg	5	ND
Dibromodiphenyl ether	-	mg/kg	5	ND
Tribromodiphenyl ether	-	mg/kg	5	ND
Tetrabromodiphenyl ether	-	mg/kg	5	ND
Pentabromodiphenyl ether	-	mg/kg	5	ND
Hexabromodiphenyl ether	-	mg/kg	5	ND
Heptabromodiphenyl ether	-	mg/kg	5	ND
Octabromodiphenyl ether	-	mg/kg	5	ND
Nonabromodiphenyl ether	-	mg/kg	5	ND
Decabromodiphenyl ether	-	mg/kg	5	ND

### Notes:

- (1) The maximum permissible limit is quoted from the directive 2011/65/EU, Annex II.

### Hexabromocyclododecane (HBCDD)

Test method: Determination of HBCDD by GC-MS based on IEC 62321:2008.

Test Item(s):	Unit	MDL	007
Hexabromocyclododecane (HBCDD)	mg/kg	10	ND

### Note:

- (1) Reference Information: Directive 2011/65/EU recasting RoHS directive 2002/95/EC:  
Hexabromocyclododecane (HBCDD) is considered as a priority for risk evaluation and substance restriction.

### Phthalates

Test Method: Determination of phthalates by GC-MS based on EN 14372:2004.

Test Item(s):	CAS No.	Unit	MDL	007
Dibutyl phthalate (DBP)	84-74-2	%(w/w)	0.003	ND
Butyl benzyl phthalate (BBP)	85-68-7	%(w/w)	0.003	ND
Bis (2-ethylhexyl) phthalate (DEHP)	117-81-7	%(w/w)	0.003	ND

### Note:

- (1) Reference Information: Directive 2011/65/EU recasting RoHS directive 2002/95/EC:  
Bis (2-ethylhexyl) phthalate (DEHP), Butyl benzyl phthalate (BBP) and Dibutyl phthalate (DBP) are considered as a priority for risk evaluation and substance restriction.



This document is issued by the Company subject to its General Conditions of Service printed overleaf, available on request or accessible at <http://www.sgs.com/en/Terms-and-Conditions.aspx> and, for electronic format documents, subject to Terms and Conditions for Electronic Documents at <http://www.sgs.com/en/Terms-and-Conditions/Terms-e-Documents.aspx>. Attention is drawn to the limitation of liability, indemnification and jurisdiction issues defined therein. Any holder of this document is advised that information contained hereon reflects the Company's findings at the time of its intervention only and within the limits of Client's instructions, if any. The Company's sole responsibility is to its Client and this document does not exonerate parties to a transaction from exercising all their rights and obligations under the transaction documents. This document cannot be reproduced except in full, without prior written approval of the Company. Any unauthorized alteration, forgery or falsification of the content or appearance of this document is unlawful and offenders may be prosecuted to the fullest extent of the law. Unless otherwise stated the results shown in this test report refer only to the sample(s) tested.

Attention: To check the authenticity of testing /inspection report & certificate, please contact us at telephone: (86-755) 8307 1443, or email: [CN.Doccheck@sgs.com](mailto:CN.Doccheck@sgs.com)

SGS Standards Technical Services Co., Ltd.  
Guangzhou Branch, Chemical Laboratory

198 Kezhu Road, Sciencetech Park Guangzhou Economic & Technology Development District, Guangzhou, China 510663 t (86-20) 82155555 f (86-20) 82075113 www.sgsgroup.com.cn  
中国·广州·经济技术开发区科学城科珠路198号 邮编: 510663 t (86-20) 82155555 f (86-20) 82075113 e [sgs.china@sgs.com](mailto:sgs.china@sgs.com)

**Phthalate**

Test Method : Determination of phthalates by GC-MS based on EN 14372:2004.

Test Item(s)	CAS NO.	Unit	MDL	007
Dibutyl Phthalate (DBP)	84-74-2	%(w/w)	0.003	ND
Benzylbutyl Phthalate (BBP)	85-68-7	%(w/w)	0.003	ND
Bis(2-ethylhexyl) Phthalate (DEHP)	117-81-7	%(w/w)	0.003	ND
Diisononyl Phthalate (DINP)	28553-12-0 / 68515-48-0	%(w/w)	0.010	ND
Di-n-octyl Phthalate (DNOP)	117-84-0	%(w/w)	0.003	ND
Diisodecyl Phthalate (DIDP)	26761-40-0 / 68515-49-1	%(w/w)	0.010	ND
Dimethyl Phthalate (DMP)	131-11-3	%(w/w)	0.003	ND
Diethyl Phthalate (DEP)	84-66-2	%(w/w)	0.003	ND
Diisobutyl Phthalate (DIBP)	84-69-5	%(w/w)	0.003	ND
Dinonyl Phthalate (DNP)	84-76-4	%(w/w)	0.003	ND
Diisooctyl Phthalate (DIOP)	27554-26-3	%(w/w)	0.010	ND
Dipropyl Phthalate (DPrP)	131-16-8	%(w/w)	0.003	ND
Dicyclohexyl Phthalate (DCHP)	84-61-7	%(w/w)	0.003	ND
Di-n-pentyl Phthalate (DnPP)	131-18-0	%(w/w)	0.003	ND
Dibenzyl Phthalate (DBzP)	523-31-9	%(w/w)	0.003	ND
Diphenyl Phthalate (DPhP)	84-62-8	%(w/w)	0.003	ND
Di-n-hexyl Phthalate (DnHP)	84-75-3	%(w/w)	0.003	ND
1,2-Benzenedicarboxylic acid, dipentyl ester, branched and linear (DPP)	84777-06-0	%(w/w)	0.010	ND

Notes:

- (1) DBP, BBP, DEHP Reference information: Entry 51 of Regulation (EC) No 552/2009 amending Annex XVII of REACH Regulation (EC) No 1907/2006 (previously restricted under Directive 2005/84/EC):
  - i) Shall not be used as substances or in mixtures, in concentrations greater than 0.1 % by weight of the plasticised material, in toys and childcare articles.
  - ii) Toys and childcare articles containing these phthalates in a concentration greater than 0.1 % by weight of the plasticised material shall not be placed on the market.  
Please refer to Regulation (EC) No 552/2009 to get more detail information
- (2) DINP, DNOP, DIDP Reference information: Entry 52 of Regulation (EC) No 552/2009 amending Annex XVII of REACH Regulation (EC) No 1907/2006 (previously restricted under Directive 2005/84/EC).
  - i) Shall not be used as substances or in mixtures, in concentrations greater than 0.1 % by weight of the plasticised material, in toys and childcare articles which can be placed in the mouth by children.
  - ii) Such toys and childcare articles containing these phthalates in a concentration greater than 0.1 % by weight of the plasticised material shall not be placed on the market.  
Please refer to Regulation (EC) No 552/2009 to get more detail information



This document is issued by the Company subject to its General Conditions of Service printed overleaf, available on request or accessible at <http://www.sgs.com/en/Terms-and-Conditions.aspx> and, for electronic format documents, subject to Terms and Conditions for Electronic Documents at <http://www.sgs.com/en/Terms-and-Conditions/Terms-e-Document.aspx>. Attention is drawn to the limitation of liability, indemnification and jurisdiction issues defined therein. Any holder of this document is advised that information contained hereon reflects the Company's findings at the time of its intervention only and within the limits of Client's instructions, if any. The Company's sole responsibility is to its Client and this document does not exonerate parties to a transaction from exercising all their rights and obligations under the transaction documents. This document cannot be reproduced except in full, without prior written approval of the Company. Any unauthorized alteration, forgery or falsification of the content or appearance of this document is unlawful and offenders may be prosecuted to the fullest extent of the law. Unless otherwise stated the results shown in this test report refer only to the sample(s) tested.

Attention: To check the authenticity of testing /inspection report & certificate, please contact us at telephone: (86-755) 8307 1443, or email: CN.Doccheck@sgs.com

**PFOS (Perfluorooctane Sulfonates) and PFOA (Perfluorooctanoic Acid)**

Test Method : With reference to US EPA Method 3550C: 2007, analysis was performed by HPLC-MS.

<u>Test Item(s)</u>	<u>CAS NO.</u>	<u>Unit</u>	<u>MDL</u>	<u>007</u>
Perfluorooctane Sulfonates (PFOS) and related Acid,Metal Salt and Amide	1763-23-1	mg/kg	10	ND
Perfluorooctanoic Acid (PFOA)	335-67-1	mg/kg	10	ND

Notes :

- For reference: commission regulation (EU) No 757/2010 amending regulation (EC) No 850/2004:
- (1) For the purposes of this entry, Article 4(1) (b) shall apply to concentrations of PFOS equal to or below 10 mg/kg (0,001 % by weight) when it occurs in substances or in preparations.
  - (2) For the purposes of this entry, Article 4(1) (b) shall apply to concentrations of PFOS in semi-finished products or articles, or parts thereof, if the concentration of PFOS is lower than 0,1 % by weight calculated with reference to the mass of structurally or micro-structurally distinct parts that contain PFOS or, for textiles or other coated materials, if the amount of PFOS is lower than 1µg /m2 of the coated material.

**Tetrabromobisphenol A (TBBP-A)**

Test Method : With reference to US EPA Method 3540C:1996, analysis was performed by GC-MS&HPLC-MS.

<u>Test Item(s)</u>	<u>Unit</u>	<u>MDL</u>	<u>007</u>
Tetrabromobisphenol A (TBBP-A)	mg/kg	10	ND



This document is issued by the Company subject to its General Conditions of Service printed overleaf, available on request or accessible at <http://www.sgs.com/en/Terms-and-Conditions.aspx> and, for electronic format documents, subject to Terms and Conditions for Electronic Documents at <http://www.sgs.com/en/Terms-and-Conditions/Terms-e-Documents.aspx>. Attention is drawn to the limitation of liability, indemnification and jurisdiction issues defined therein. Any holder of this document is advised that information contained hereon reflects the Company's findings at the time of its intervention only and within the limits of Client's instructions, if any. The Company's sole responsibility is to its Client and this document does not exonerate parties to a transaction from exercising all their rights and obligations under the transaction documents. This document cannot be reproduced except in full, without prior written approval of the Company. Any unauthorized alteration, forgery or falsification of the content or appearance of this document is unlawful and offenders may be prosecuted to the fullest extent of the law. Unless otherwise stated the results shown in this test report refer only to the sample(s) tested.

**Attention: To check the authenticity of testing /inspection report & certificate, please contact us at telephone: (86-755) 8307 1443, or email: CN.Doccheck@sgs.com**

## Test Report

No.: CANEC1501730313

Date: 13 Feb 2015

Page 6 of 18

### Short Chained Chlorinated Paraffin (SCCP)

Test Method : With reference to US EPA 3550C: 2007, analysis was performed by GC-ECD.

<u>Test Item(s)</u>	<u>Unit</u>	<u>MDL</u>	<u>007</u>
Short Chained Chlorinated Paraffin (SCCP)	mg/kg	50	ND

### Formaldehyde

Test Method : With reference to ISO 14184-1:2011, analysis was performed by UV-Vis.

<u>Test Item(s)</u>	<u>CAS NO.</u>	<u>Unit</u>	<u>MDL</u>	<u>007</u>
Free & Hydrolyzed Formaldehyde	50-00-0	mg/kg	16	ND

### Organic-tin compounds

Test Method : With reference to ISO 17353: 2004 , analysis was performed by GC-MS.

<u>Test Item(s)</u>	<u>Unit</u>	<u>MDL</u>	<u>007</u>
Dibutyl tin (DBT)	mg/kg	0.02	ND
Tributyl tin (TBT)	mg/kg	0.02	ND
Diocetyl tin (DOT)	mg/kg	0.02	ND
Triphenyl tin (TPHT)	mg/kg	0.02	ND



This document is issued by the Company subject to its General Conditions of Service printed overleaf, available on request or accessible at <http://www.sgs.com/en/Terms-and-Conditions.aspx> and, for electronic format documents, subject to Terms and Conditions for Electronic Documents at <http://www.sgs.com/en/Terms-and-Conditions/Terms-e-Document.aspx>. Attention is drawn to the limitation of liability, indemnification and jurisdiction issues defined therein. Any holder of this document is advised that information contained hereon reflects the Company's findings at the time of its intervention only and within the limits of Client's instructions, if any. The Company's sole responsibility is to its Client and this document does not exonerate parties to a transaction from exercising all their rights and obligations under the transaction documents. This document cannot be reproduced except in full, without prior written approval of the Company. Any unauthorized alteration, forgery or falsification of the content or appearance of this document is unlawful and offenders may be prosecuted to the fullest extent of the law. Unless otherwise stated the results shown in this test report refer only to the sample(s) tested.

Attention: To check the authenticity of testing /inspection report & certificate, please contact us at telephone: (86-755) 8307 1443, or email: [CN.Doccheck@sgs.com](mailto:CN.Doccheck@sgs.com)

SGS-CTC Standards Technical Services Co., Ltd.  
Guangzhou Branch Testing Center Chemical Laboratory

198 Kezhu Road, Sciencetech Park Guangzhou Economic & Technology Development District, Guangzhou, China 510663 t (86-20) 82155555 f (86-20) 82075113 www.sgsgroup.com.cn  
中国·广州·经济技术开发区科学城科珠路198号 邮编: 510663 t (86-20) 82155555 f (86-20) 82075113 e [sgs.china@sgs.com](mailto:sgs.china@sgs.com)

**Ozone Depleting Substances (ODS)**

Test Method : With reference to US EPA 5021A-2003, Analysis was performed by HS-GC-MS.

Test Item(s)	CAS No.	Unit	MDL	007
<b>CFC</b>				
CFC-11	75-69-4	mg/kg	0.1	ND
CFC-12	75-71-8	mg/kg	0.1	ND
CFC-13	75-72-9	mg/kg	0.1	ND
CFC-111	354-56-3	mg/kg	0.1	ND
CFC-112	76-11-9	mg/kg	0.1	ND
CFC-112	76-12-0	mg/kg	0.1	ND
CFC-113	354-58-5	mg/kg	0.1	ND
CFC-113	76-13-1	mg/kg	0.1	ND
CFC-114	374-07-2	mg/kg	0.1	ND
CFC-114	76-14-2	mg/kg	0.1	ND
CFC-115	76-15-3	mg/kg	0.1	ND
CFC-211	422-78-6	mg/kg	0.1	ND
CFC-212	661-96-1	mg/kg	0.1	ND
CFC-213	1652-89-7	mg/kg	0.1	ND
CFC-214	677-68-9	mg/kg	0.1	ND
CFC-215	1599-41-3	mg/kg	0.1	ND
CFC-215	76-17-5	mg/kg	0.1	ND
CFC-216	661-97-2	mg/kg	0.1	ND
CFC-216	1652-80-8	mg/kg	0.1	ND
CFC-217	422-86-6	mg/kg	0.1	ND
<b>HCFC</b>				
HCFC-21	75-43-4	mg/kg	0.1	ND
HCFC-22	75-45-6	mg/kg	0.1	ND
HCFC-31	593-70-4	mg/kg	0.1	ND
HCFC-121	354-14-3	mg/kg	0.1	ND
HCFC-122	354-21-2	mg/kg	0.1	ND
HCFC-123	306-83-2	mg/kg	0.1	ND
HCFC-123a	354-23-4	mg/kg	0.1	ND
HCFC-124	2837-89-0	mg/kg	0.1	ND
HCFC-124a	354-25-6	mg/kg	0.1	ND
HCFC-131	359-28-4	mg/kg	0.1	ND
HCFC-131a	811-95-0	mg/kg	0.1	ND
HCFC-132a	471-43-2	mg/kg	0.1	ND
HCFC-132b	1649-08-7	mg/kg	0.1	ND
HCFC-133a	75-88-7	mg/kg	0.1	ND
HCFC-141b	1717-00-6	mg/kg	0.1	ND
HCFC-142b	75-68-3	mg/kg	0.1	ND
HCFC-221	422-26-4	mg/kg	0.1	ND
HCFC-222	422-30-0	mg/kg	0.1	ND
HCFC-223	422-52-6	mg/kg	0.1	ND
HCFC-225ca	422-56-0	mg/kg	0.1	ND
HCFC-225cb	507-55-1	mg/kg	0.1	ND



This document is issued by the Company subject to its General Conditions of Service printed overleaf, available on request or accessible at <http://www.sgs.com/en/Terms-and-Conditions.aspx> and, for electronic format documents, subject to Terms and Conditions for Electronic Documents at <http://www.sgs.com/en/Terms-and-Conditions/Terms-e-Document.aspx>. Attention is drawn to the limitation of liability, indemnification and jurisdiction issues defined therein. Any holder of this document is advised that information contained hereon reflects the Company's findings at the time of its intervention only and within the limits of Client's instructions, if any. The Company's sole responsibility is to its Client and this document does not exonerate parties to a transaction from exercising all their rights and obligations under the transaction documents. This document cannot be reproduced except in full, without prior written approval of the Company. Any unauthorized alteration, forgery or falsification of the content or appearance of this document is unlawful and offenders may be prosecuted to the fullest extent of the law. Unless otherwise stated the results shown in this test report refer only to the sample(s) tested.

Attention: To check the authenticity of testing /inspection report & certificate, please contact us at telephone: (86-755) 8307 1443, or email: [CN.Doccheck@sgs.com](mailto:CN.Doccheck@sgs.com)

HCFC-226	431-87-8	mg/kg	0.1	ND
HCFC-231	421-94-3	mg/kg	0.1	ND
HCFC-232	460-89-9	mg/kg	0.1	ND
HCFC-233	7125-84-0	mg/kg	0.1	ND
HCFC-234	425-94-5	mg/kg	0.1	ND
HCFC-235	460-92-4	mg/kg	0.1	ND
HCFC-241	666-27-3	mg/kg	0.1	ND
HCFC-242	460-63-9	mg/kg	0.1	ND
HCFC-243	338-75-0	mg/kg	0.1	ND
HCFC-244	679-85-6	mg/kg	0.1	ND
HCFC-251	421-41-0	mg/kg	0.1	ND
HCFC-252	819-00-1	mg/kg	0.1	ND
HCFC-253	460-35-5	mg/kg	0.1	ND
HCFC-261	7799-56-6	mg/kg	0.1	ND
HCFC-261	420-97-3	mg/kg	0.1	ND
HCFC-271	430-55-7	mg/kg	0.1	ND
HCFC-262	102738-79-4	mg/kg	0.1	ND
HCFC-262	420-99-5	mg/kg	0.1	ND

### HBFC

### CAS No.

	CAS No.			
CHF <sub>2</sub> Br	1511-62-2	mg/kg	0.1	ND
CH <sub>2</sub> FBr	373-52-4	mg/kg	0.1	ND
C <sub>2</sub> HFBr <sub>4</sub>	-	mg/kg	0.1	ND
C <sub>2</sub> HF <sub>2</sub> Br <sub>3</sub>	-	mg/kg	0.1	ND
C <sub>2</sub> HF <sub>3</sub> Br <sub>2</sub>	354-04-1	mg/kg	0.1	ND
C <sub>2</sub> HF <sub>4</sub> Br	-	mg/kg	0.1	ND
C <sub>2</sub> H <sub>2</sub> FBr <sub>3</sub>	-	mg/kg	0.1	ND
C <sub>2</sub> H <sub>2</sub> F <sub>2</sub> Br <sub>2</sub>	75-82-1	mg/kg	0.1	ND
C <sub>2</sub> H <sub>2</sub> F <sub>3</sub> Br	421-06-7	mg/kg	0.1	ND
C <sub>2</sub> H <sub>3</sub> FBr <sub>2</sub>	-	mg/kg	0.1	ND
C <sub>2</sub> H <sub>3</sub> F <sub>2</sub> Br	359-07-9	mg/kg	0.1	ND
C <sub>2</sub> H <sub>4</sub> FBr	762-49-2	mg/kg	0.1	ND
C <sub>3</sub> HFBr <sub>6</sub>	-	mg/kg	0.1	ND
C <sub>3</sub> HF <sub>2</sub> Br <sub>5</sub>	-	mg/kg	0.1	ND
C <sub>3</sub> HF <sub>3</sub> Br <sub>4</sub>	-	mg/kg	0.1	ND
C <sub>3</sub> HF <sub>4</sub> Br <sub>3</sub>	-	mg/kg	0.1	ND
C <sub>3</sub> HF <sub>5</sub> Br <sub>2</sub>	-	mg/kg	0.1	ND
C <sub>3</sub> HF <sub>6</sub> Br	-	mg/kg	0.1	ND
C <sub>3</sub> H <sub>2</sub> FBr <sub>5</sub>	-	mg/kg	0.1	ND
C <sub>3</sub> H <sub>2</sub> F <sub>2</sub> Br <sub>4</sub>	-	mg/kg	0.1	ND
C <sub>3</sub> H <sub>2</sub> F <sub>3</sub> Br <sub>3</sub>	-	mg/kg	0.1	ND
C <sub>3</sub> H <sub>2</sub> F <sub>4</sub> Br <sub>2</sub>	-	mg/kg	0.1	ND
C <sub>3</sub> H <sub>2</sub> F <sub>5</sub> Br	-	mg/kg	0.1	ND
C <sub>3</sub> H <sub>3</sub> FBr <sub>4</sub>	-	mg/kg	0.1	ND
C <sub>3</sub> H <sub>3</sub> F <sub>2</sub> Br <sub>3</sub>	-	mg/kg	0.1	ND
C <sub>3</sub> H <sub>3</sub> F <sub>3</sub> Br <sub>2</sub>	-	mg/kg	0.1	ND
C <sub>3</sub> H <sub>3</sub> F <sub>4</sub> Br	-	mg/kg	0.1	ND
C <sub>3</sub> H <sub>4</sub> FBr <sub>3</sub>	-	mg/kg	0.1	ND
C <sub>3</sub> H <sub>4</sub> F <sub>2</sub> Br <sub>2</sub>	-	mg/kg	0.1	ND
C <sub>3</sub> H <sub>4</sub> F <sub>3</sub> Br	-	mg/kg	0.1	ND
C <sub>3</sub> H <sub>5</sub> FBr <sub>2</sub>	-	mg/kg	0.1	ND



This document is issued by the Company subject to its General Conditions of Service printed overleaf, available on request or accessible at <http://www.sgs.com/en/Terms-and-Conditions.aspx> and, for electronic format documents, subject to Terms and Conditions for Electronic Documents at <http://www.sgs.com/en/Terms-and-Conditions/Terms-e-Documents.aspx>. Attention is drawn to the limitation of liability, indemnification and jurisdiction issues defined therein. Any holder of this document is advised that information contained hereon reflects the Company's findings at the time of its intervention only and within the limits of Client's instructions, if any. The Company's sole responsibility is to its Client and this document does not exonerate parties to a transaction from exercising all their rights and obligations under the transaction documents. This document cannot be reproduced except in full, without prior written approval of the Company. Any unauthorized alteration, forgery or falsification of the content or appearance of this document is unlawful and offenders may be prosecuted to the fullest extent of the law. Unless otherwise stated the results shown in this test report refer only to the sample(s) tested.

Attention: To check the authenticity of testing / inspection report & certificate, please contact us at telephone: (86-755) 8307 1443, or email: [CN.Doccheck@sgs.com](mailto:CN.Doccheck@sgs.com)



## Test Report

No.: CANEC1501730313

Date: 13 Feb 2015

Page 9 of 18

C <sub>3</sub> H <sub>5</sub> F <sub>2</sub> Br	-	mg/kg	0.1	ND
C <sub>3</sub> H <sub>6</sub> FBr	-	mg/kg	0.1	ND
<b>HALON</b>	<b>CAS No.</b>	-	-	-
Halon 1211	353-59-3	mg/kg	0.1	ND
Halon 1301	75-63-8	mg/kg	0.1	ND
Halon 2402	124-73-2	mg/kg	0.1	ND
<b>OTHERS</b>	<b>CAS No.</b>	-	-	-
Dibromofluoromethane	1868-53-7	mg/kg	0.1	ND
Methyl bromide	74-83-9	mg/kg	0.1	ND
Bromochloromethane	74-97-5	mg/kg	0.1	ND
SF <sub>6</sub>	2551-62-4	mg/kg	0.1	ND
<b>HFC</b>	<b>CAS No.</b>	-	-	ND
HFC-23	75-46-7	mg/kg	0.1	ND
HFC-32	75-10-5	mg/kg	0.1	ND
HFC-41	593-53-3	mg/kg	0.1	ND
HFC-43-10mee	-	mg/kg	0.1	ND
HFC-125	354-33-6	mg/kg	0.1	ND
HFC-134	359-35-3	mg/kg	0.1	ND
HFC-134a	811-97-2	mg/kg	0.1	ND
HFC-152a	75-37-6	mg/kg	0.1	ND
HFC-143	420-46-2	mg/kg	0.1	ND
HFC-143a	430-66-0	mg/kg	0.1	ND
HFC-227ea	-	mg/kg	0.1	ND
HFC-236 cb	-	mg/kg	0.1	ND
HFC-236ea	431-63-0	mg/kg	0.1	ND
HFC-236fa	690-39-1	mg/kg	0.1	ND
HFC-245ca	679-86-7	mg/kg	0.1	ND
HFC-245fa	-	mg/kg	0.1	ND
HFC-365mfc	-	mg/kg	0.1	ND
<b>PFC</b>	<b>CAS No.</b>	-	-	-
Perfluoromethane	75-73-0	mg/kg	0.1	ND
Perfluoroethane	76-16-4	mg/kg	0.1	ND
Perfluoropropane	76-19-7	mg/kg	0.1	ND
Perfluorobutane	355-25-9	mg/kg	0.1	ND
Perfluoropentane	678-26-2	mg/kg	0.1	ND
Perfluorohexane	355-42-0	mg/kg	0.1	ND
Perfluorocyclobutane	115-25-3	mg/kg	0.1	ND
<b>CHC</b>	<b>CAS No.</b>	-	-	-
1,3-dichloropropane	142-28-9	mg/kg	0.1	ND
2,2-dichloropropane	594-20-7	mg/kg	0.1	ND
Carbon tetrachloride	56-23-5	mg/kg	0.1	ND
Chloroethane	75-00-3	mg/kg	0.1	ND
Chloroform	67-66-3	mg/kg	0.1	ND
Chloromethane	74-87-3	mg/kg	0.1	ND
Cis-1,2-dichloroethene	156-59-2	mg/kg	0.1	ND
Cis-1,3-dichloropropene	10061-01-5	mg/kg	0.1	ND



This document is issued by the Company subject to its General Conditions of Service printed overleaf, available on request or accessible at <http://www.sgs.com/en/Terms-and-Conditions.aspx> and, for electronic format documents, subject to Terms and Conditions for Electronic Documents at <http://www.sgs.com/en/Terms-and-Conditions/Terms-e-Document.aspx>. Attention is drawn to the limitation of liability, indemnification and jurisdiction issues defined therein. Any holder of this document is advised that information contained hereon reflects the Company's findings at the time of its intervention only and within the limits of Client's instructions, if any. The Company's sole responsibility is to its Client and this document does not exonerate parties to a transaction from exercising all their rights and obligations under the transaction documents. This document cannot be reproduced except in full, without prior written approval of the Company. Any unauthorized alteration, forgery or falsification of the content or appearance of this document is unlawful and offenders may be prosecuted to the fullest extent of the law. Unless otherwise stated the results shown in this test report refer only to the sample(s) tested.

Attention: To check the authenticity of testing /inspection report & certificate, please contact us at telephone: (86-755) 8307 1443, or email: [CN.Doccheck@sgs.com](mailto:CN.Doccheck@sgs.com)

## Test Report

No.: CANEC1501730313

Date: 13 Feb 2015

Page 10 of 18

Hexachlorobutadiene	87-68-3	mg/kg	0.1	ND
Methylene chloride	75-09-2	mg/kg	0.1	ND
Tetrachloroethylene	127-18-4	mg/kg	0.1	ND
Trans-1,2-dichloroethene	156-60-5	mg/kg	0.1	ND
Trans-1,3-dichloropropene	10061-02-6	mg/kg	0.1	ND
Trichloroethylene	79-01-6	mg/kg	0.1	ND
1,1,1,2-tetrachloroethane	630-20-6	mg/kg	0.1	ND
1,1,1-trichloroethane	71-55-6	mg/kg	0.1	ND
1,1,2,2-tetrachloroethane	79-34-5	mg/kg	0.1	ND
1,1,2-trichloroethane	79-00-5	mg/kg	0.1	ND
1,1-dichloroethane	75-34-3	mg/kg	0.1	ND
1,1-dichloroethene	75-35-4	mg/kg	0.1	ND
1,1-dichloropropene	563-58-6	mg/kg	0.1	ND
1,2,3-trichloropropane	96-18-4	mg/kg	0.1	ND
1,2-dichloroethane	107-06-2	mg/kg	0.1	ND
1,2-dichloropropane	78-87-5	mg/kg	0.1	ND

### Element(s)

Test Method: SGS In House Method(GZRD-R&D-TOP-104) & US EPA Method 3052:1996, analysis was performed by IC and ICP-OES.

<u>Test Item(s)</u>	<u>Unit</u>	<u>MDL</u>	<u>007</u>
Arsenic (As)	mg/kg	10	ND
Antimony (Sb)	mg/kg	10	ND
Cobalt (Co)	mg/kg	5	ND
Cobalt Dichloride (CoCl <sub>2</sub> )◆	mg/kg	100	ND

Note:

(1) ◆ Results of cobalt dichloride are calculated based on the results of cobalt and chloride



This document is issued by the Company subject to its General Conditions of Service printed overleaf, available on request or accessible at <http://www.sgs.com/en/Terms-and-Conditions.aspx> and, for electronic format documents, subject to Terms and Conditions for Electronic Documents at <http://www.sgs.com/en/Terms-and-Conditions/Terms-e-Document.aspx>. Attention is drawn to the limitation of liability, indemnification and jurisdiction issues defined therein. Any holder of this document is advised that information contained hereon reflects the Company's findings at the time of its intervention only and within the limits of Client's instructions, if any. The Company's sole responsibility is to its Client and this document does not exonerate parties to a transaction from exercising all their rights and obligations under the transaction documents. This document cannot be reproduced except in full, without prior written approval of the Company. Any unauthorized alteration, forgery or falsification of the content or appearance of this document is unlawful and offenders may be prosecuted to the fullest extent of the law. Unless otherwise stated the results shown in this test report refer only to the sample(s) tested.

Attention: To check the authenticity of testing /inspection report & certificate, please contact us at telephone: (86-755) 8307 1443, or email: [CN.Doccheck@sgs.com](mailto:CN.Doccheck@sgs.com)

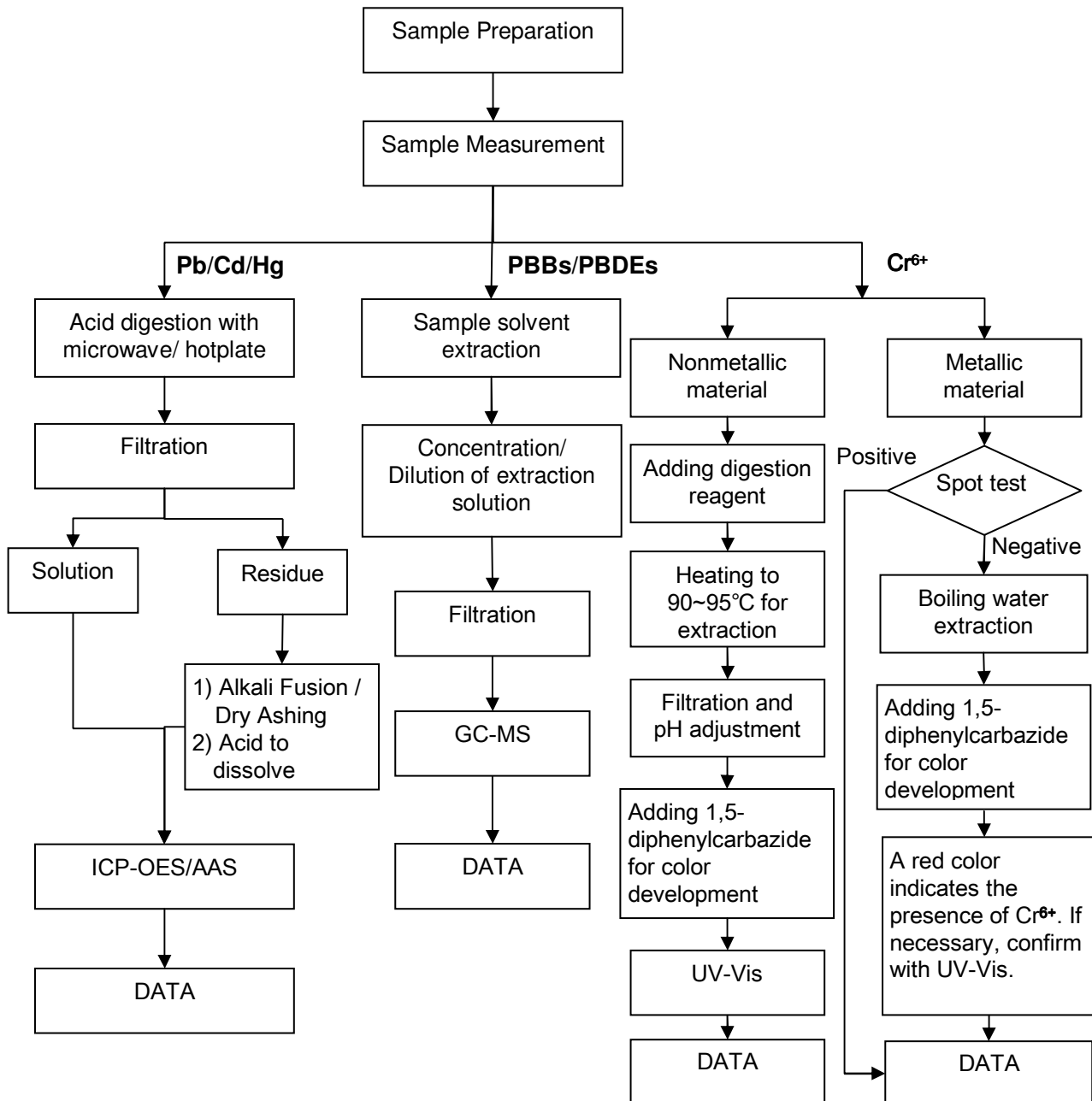
SGS Standards Technical Services Co., Ltd.  
Guangzhou Branch, Chemical Laboratory

198 Kezhu Road, Sciencetech Park Guangzhou Economic & Technology Development District, Guangzhou, China 510663 t (86-20) 82155555 f (86-20) 82075113 www.sgsgroup.com.cn  
中国·广州·经济技术开发区科学城科珠路198号 邮编: 510663 t (86-20) 82155555 f (86-20) 82075113 e [sgs.china@sgs.com](mailto:sgs.china@sgs.com)

## ATTACHMENTS

### RoHS Testing Flow Chart

- 1) Name of the person who made testing: Bruce Xiao / Sunny Hu
- 2) Name of the person in charge of testing: Bella Wang / Cutey Yu
- 3) These samples were dissolved totally by pre-conditioning method according to below flow chart (Cr<sup>6+</sup> and PBBs/PBDEs test method excluded).



This document is issued by the Company subject to its General Conditions of Service printed overleaf, available on request or accessible at <http://www.sgs.com/en/Terms-and-Conditions.aspx> and, for electronic format documents, subject to Terms and Conditions for Electronic Documents at <http://www.sgs.com/en/Terms-and-Conditions/Terms-e-Documents.aspx>. Attention is drawn to the limitation of liability, indemnification and jurisdiction issues defined therein. Any holder of this document is advised that information contained hereon reflects the Company's findings at the time of its intervention only and within the limits of Client's instructions, if any. The Company's sole responsibility is to its Client and this document does not exonerate parties to a transaction from exercising all their rights and obligations under the transaction documents. This document cannot be reproduced except in full, without prior written approval of the Company. Any unauthorized alteration, forgery or falsification of the content or appearance of this document is unlawful and offenders may be prosecuted to the fullest extent of the law. Unless otherwise stated the results shown in this test report refer only to the sample(s) tested.

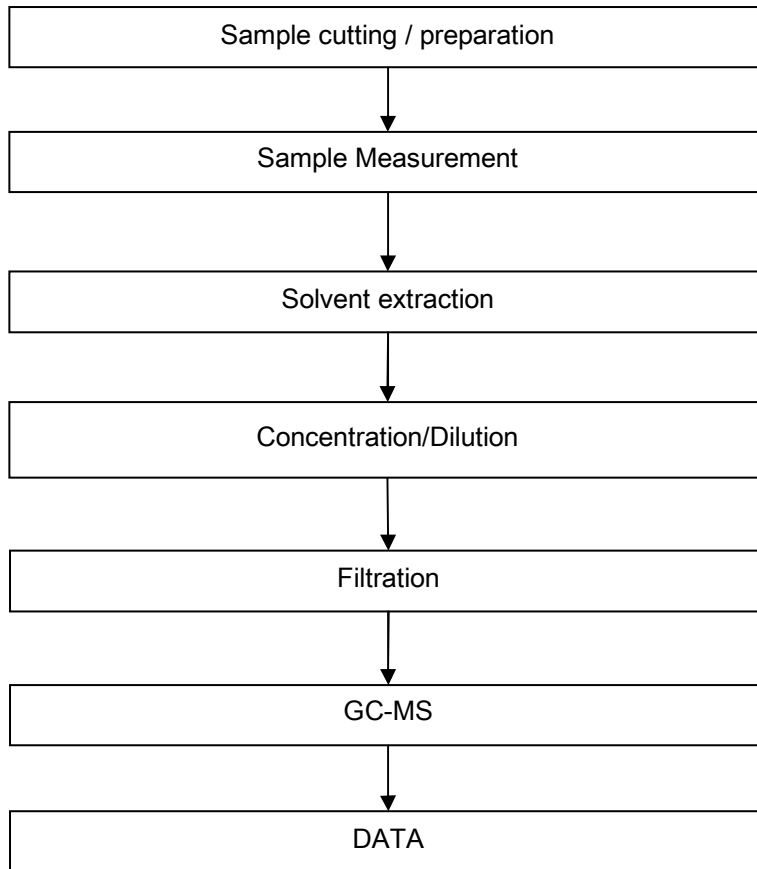
Attention: To check the authenticity of testing / inspection report & certificate, please contact us at telephone: (86-755) 8307 1443, or email: [CN.Doccheck@sgs.com](mailto:CN.Doccheck@sgs.com)

198 Kezhu Road, Science Park Guangzhou Economic & Technology Development District, Guangzhou, China 510663 t (86-20) 82155555 f (86-20) 82075113 www.sgs.com.cn  
中国·广州·经济技术开发区科学城科珠路198号 邮编: 510663 t (86-20) 82155555 f (86-20) 82075113 e [sgs.china@sgs.com](mailto:sgs.china@sgs.com)

ATTACHMENTS

HBCDD Testing Flow Chart

- 1) Name of the person who made testing: Sunny Hu
- 2) Name of the person in charge of testing: Cutey Yu



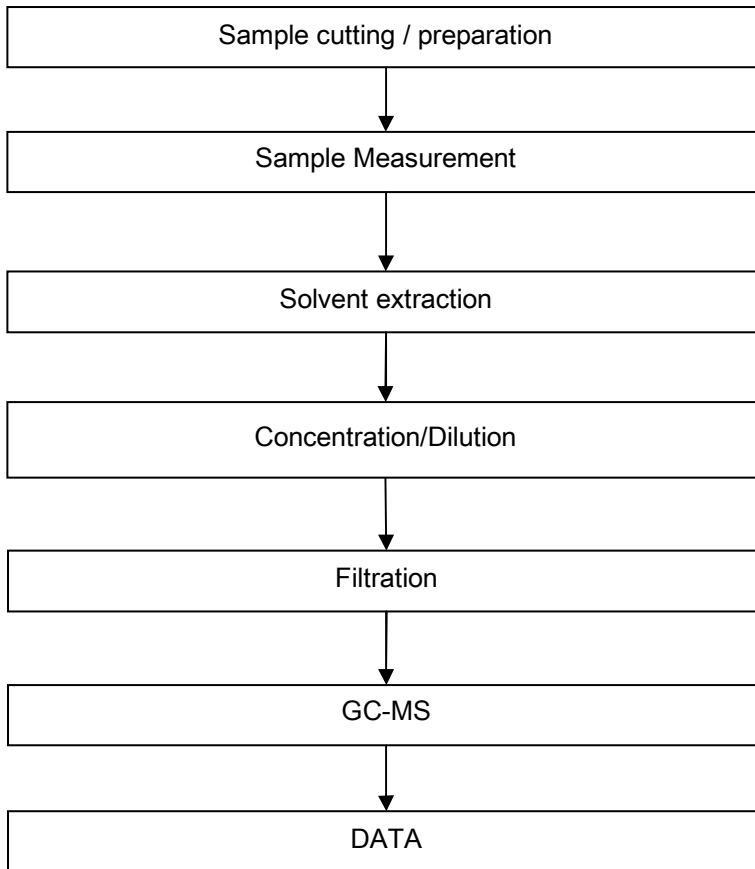
This document is issued by the Company subject to its General Conditions of Service printed overleaf, available on request or accessible at <http://www.sgs.com/en/Terms-and-Conditions.aspx> and, for electronic format documents, subject to Terms and Conditions for Electronic Documents at <http://www.sgs.com/en/Terms-and-Conditions/Terms-e-Document.aspx>. Attention is drawn to the limitation of liability, indemnification and jurisdiction issues defined therein. Any holder of this document is advised that information contained hereon reflects the Company's findings at the time of its intervention only and within the limits of Client's instructions, if any. The Company's sole responsibility is to its Client and this document does not exonerate parties to a transaction from exercising all their rights and obligations under the transaction documents. This document cannot be reproduced except in full, without prior written approval of the Company. Any unauthorized alteration, forgery or falsification of the content or appearance of this document is unlawful and offenders may be prosecuted to the fullest extent of the law. Unless otherwise stated the results shown in this test report refer only to the sample(s) tested.

**Attention: To check the authenticity of testing /inspection report & certificate, please contact us at telephone: (86-755) 8307 1443, or email: CN.Doccheck@sgs.com**

ATTACHMENTS

Phthalates Testing Flow Chart

- 1) Name of the person who made testing: Sunny Hu
- 2) Name of the person in charge of testing: Cutey Yu



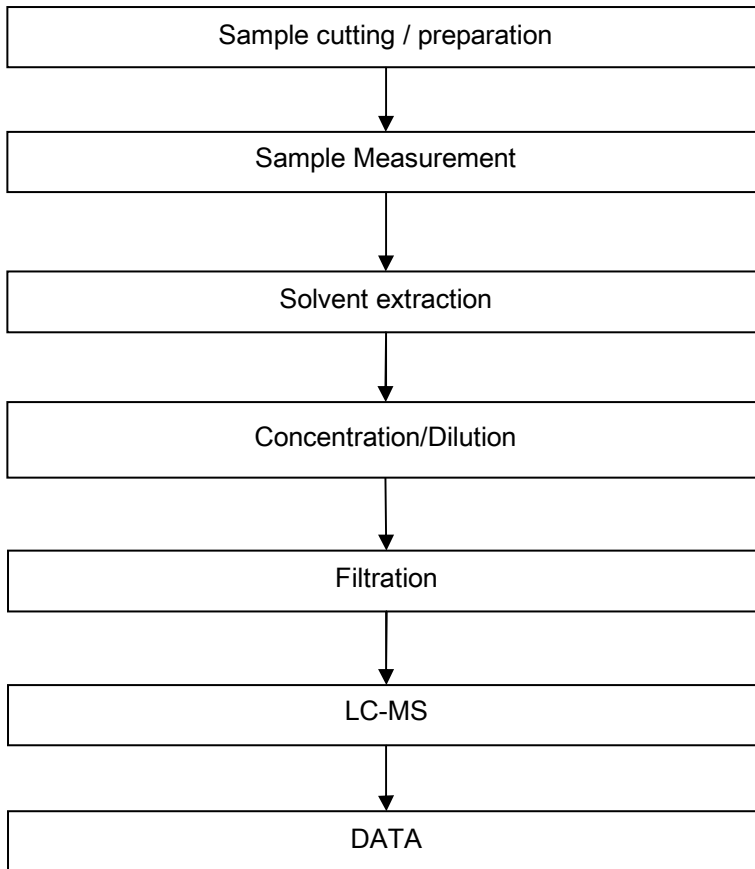
This document is issued by the Company subject to its General Conditions of Service printed overleaf, available on request or accessible at <http://www.sgs.com/en/Terms-and-Conditions.aspx> and, for electronic format documents, subject to Terms and Conditions for Electronic Documents at <http://www.sgs.com/en/Terms-and-Conditions/Terms-e-Document.aspx>. Attention is drawn to the limitation of liability, indemnification and jurisdiction issues defined therein. Any holder of this document is advised that information contained hereon reflects the Company's findings at the time of its intervention only and within the limits of Client's instructions, if any. The Company's sole responsibility is to its Client and this document does not exonerate parties to a transaction from exercising all their rights and obligations under the transaction documents. This document cannot be reproduced except in full, without prior written approval of the Company. Any unauthorized alteration, forgery or falsification of the content or appearance of this document is unlawful and offenders may be prosecuted to the fullest extent of the law. Unless otherwise stated the results shown in this test report refer only to the sample(s) tested.

**Attention: To check the authenticity of testing /inspection report & certificate, please contact us at telephone: (86-755) 8307 1443, or email: CN.Doccheck@sgs.com**

ATTACHMENTS

PFOA / PFOS Testing Flow Chart

- 1) Name of the person who made testing: Zhihong Wang
- 2) Name of the person in charge of testing: Cutey Yu



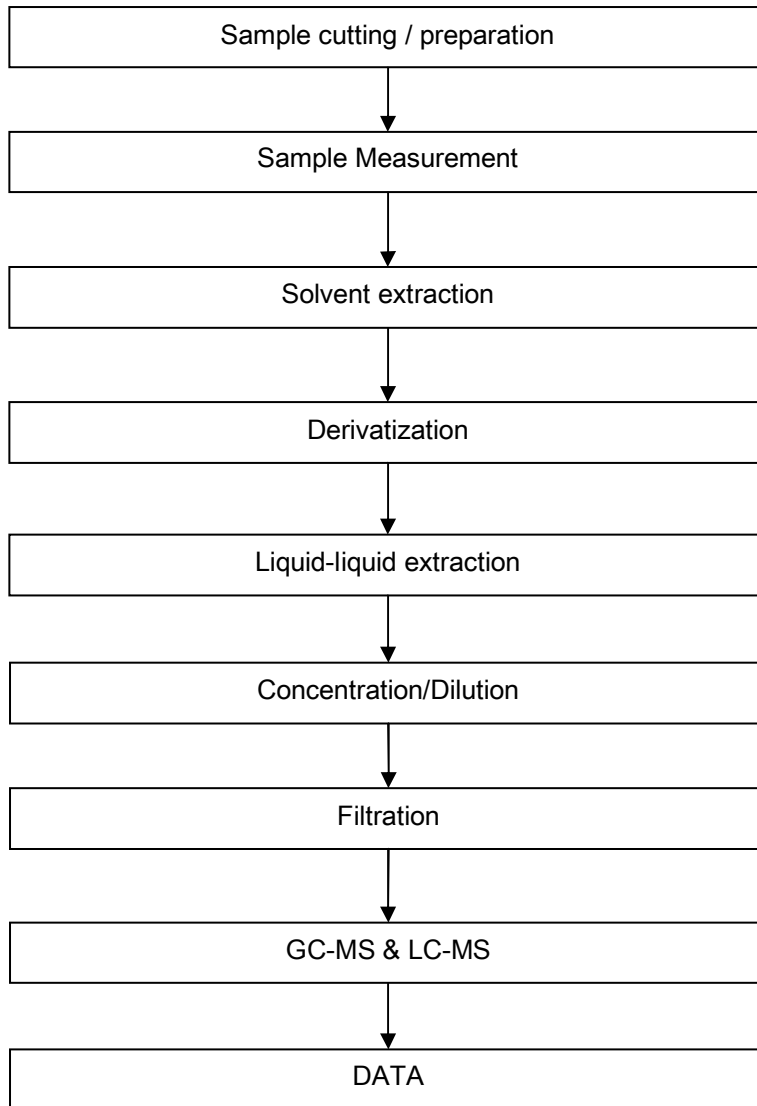
This document is issued by the Company subject to its General Conditions of Service printed overleaf, available on request or accessible at <http://www.sgs.com/en/Terms-and-Conditions.aspx> and, for electronic format documents, subject to Terms and Conditions for Electronic Documents at <http://www.sgs.com/en/Terms-and-Conditions/Terms-e-Document.aspx>. Attention is drawn to the limitation of liability, indemnification and jurisdiction issues defined therein. Any holder of this document is advised that information contained hereon reflects the Company's findings at the time of its intervention only and within the limits of Client's instructions, if any. The Company's sole responsibility is to its Client and this document does not exonerate parties to a transaction from exercising all their rights and obligations under the transaction documents. This document cannot be reproduced except in full, without prior written approval of the Company. Any unauthorized alteration, forgery or falsification of the content or appearance of this document is unlawful and offenders may be prosecuted to the fullest extent of the law. Unless otherwise stated the results shown in this test report refer only to the sample(s) tested.

Attention: To check the authenticity of testing / inspection report & certificate, please contact us at telephone: (86-755) 8307 1443, or email: [CN.Doccheck@sgs.com](mailto:CN.Doccheck@sgs.com)

ATTACHMENTS

TBBP-A Testing Flow Chart

- 1) Name of the person who made testing: Erin Guo
- 2) Name of the person in charge of testing: Cutey Yu



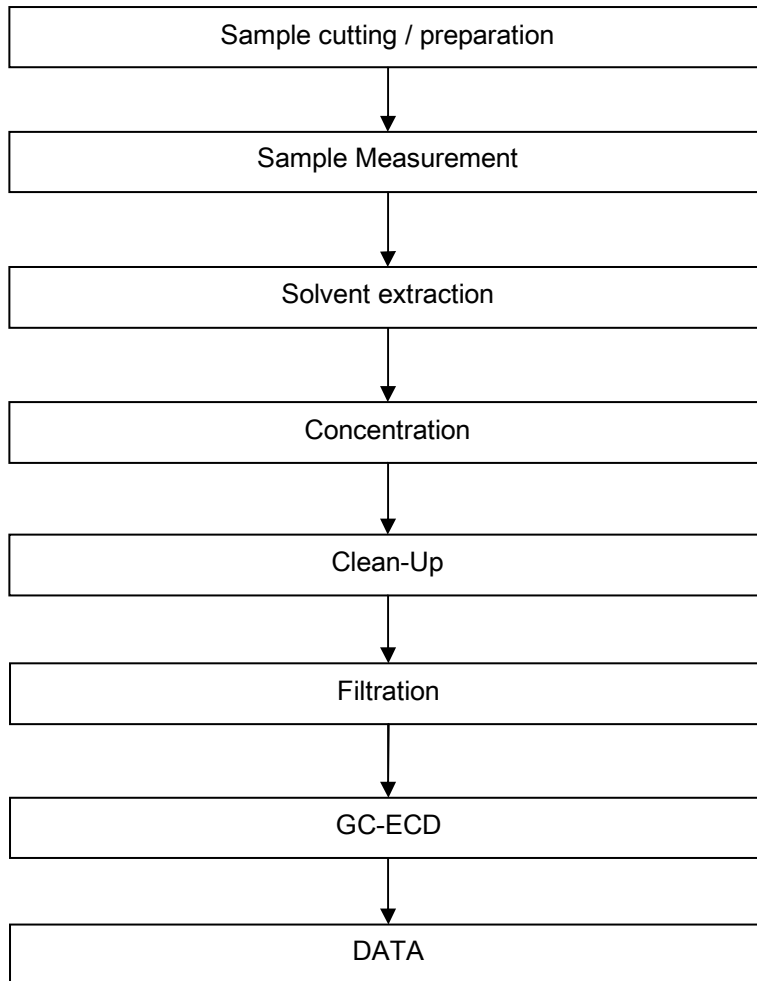
This document is issued by the Company subject to its General Conditions of Service printed overleaf, available on request or accessible at <http://www.sgs.com/en/Terms-and-Conditions.aspx> and, for electronic format documents, subject to Terms and Conditions for Electronic Documents at <http://www.sgs.com/en/Terms-and-Conditions/Terms-e-Document.aspx>. Attention is drawn to the limitation of liability, indemnification and jurisdiction issues defined therein. Any holder of this document is advised that information contained hereon reflects the Company's findings at the time of its intervention only and within the limits of Client's instructions, if any. The Company's sole responsibility is to its Client and this document does not exonerate parties to a transaction from exercising all their rights and obligations under the transaction documents. This document cannot be reproduced except in full, without prior written approval of the Company. Any unauthorized alteration, forgery or falsification of the content or appearance of this document is unlawful and offenders may be prosecuted to the fullest extent of the law. Unless otherwise stated the results shown in this test report refer only to the sample(s) tested.

Attention: To check the authenticity of testing /inspection report & certificate, please contact us at telephone: (86-755) 8307 1443, or email: [CN.Doccheck@sgs.com](mailto:CN.Doccheck@sgs.com)

ATTACHMENTS

SCCP/MCCP Testing Flow Chart

- 1) Name of the person who made testing: Alison Zhang
- 2) Name of the person in charge of testing: Cutey Yu



This document is issued by the Company subject to its General Conditions of Service printed overleaf, available on request or accessible at <http://www.sgs.com/en/Terms-and-Conditions.aspx> and, for electronic format documents, subject to Terms and Conditions for Electronic Documents at <http://www.sgs.com/en/Terms-and-Conditions/Terms-e-Document.aspx>. Attention is drawn to the limitation of liability, indemnification and jurisdiction issues defined therein. Any holder of this document is advised that information contained hereon reflects the Company's findings at the time of its intervention only and within the limits of Client's instructions, if any. The Company's sole responsibility is to its Client and this document does not exonerate parties to a transaction from exercising all their rights and obligations under the transaction documents. This document cannot be reproduced except in full, without prior written approval of the Company. Any unauthorized alteration, forgery or falsification of the content or appearance of this document is unlawful and offenders may be prosecuted to the fullest extent of the law. Unless otherwise stated the results shown in this test report refer only to the sample(s) tested.

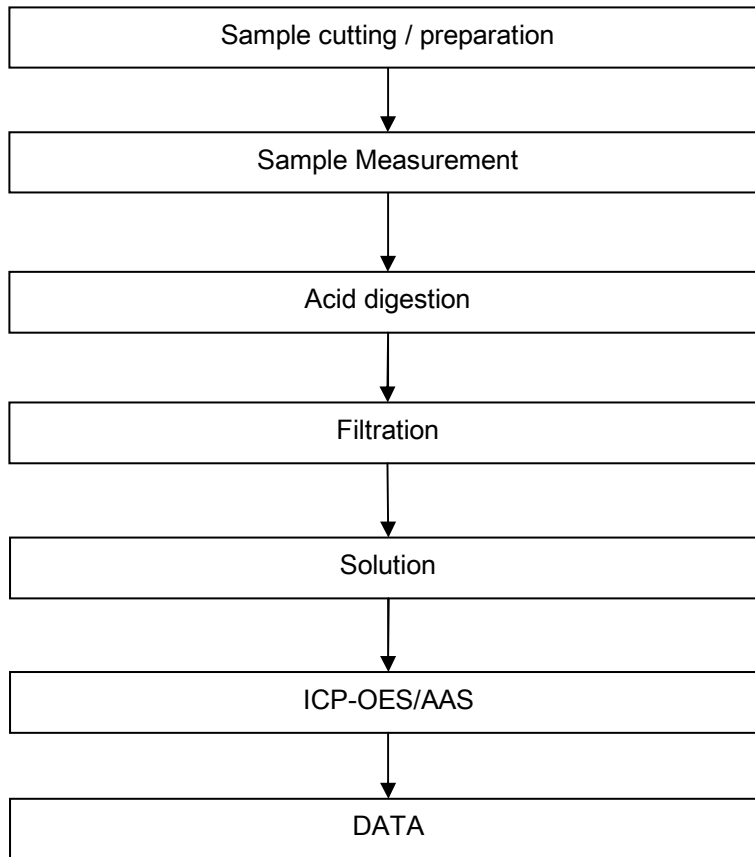
Attention: To check the authenticity of testing /inspection report & certificate, please contact us at telephone: (86-755) 8307 1443, or email: [CN.Doccheck@sgs.com](mailto:CN.Doccheck@sgs.com)



ATTACHMENTS

Elementary Testing Flow Chart

- 1) Name of the person who made testing: Bruce Xiao
- 2) Name of the person in charge of testing: Bella Wang



This document is issued by the Company subject to its General Conditions of Service printed overleaf, available on request or accessible at <http://www.sgs.com/en/Terms-and-Conditions.aspx> and, for electronic format documents, subject to Terms and Conditions for Electronic Documents at <http://www.sgs.com/en/Terms-and-Conditions/Terms-e-Document.aspx>. Attention is drawn to the limitation of liability, indemnification and jurisdiction issues defined therein. Any holder of this document is advised that information contained hereon reflects the Company's findings at the time of its intervention only and within the limits of Client's instructions, if any. The Company's sole responsibility is to its Client and this document does not exonerate parties to a transaction from exercising all their rights and obligations under the transaction documents. This document cannot be reproduced except in full, without prior written approval of the Company. Any unauthorized alteration, forgery or falsification of the content or appearance of this document is unlawful and offenders may be prosecuted to the fullest extent of the law. Unless otherwise stated the results shown in this test report refer only to the sample(s) tested.

**Attention: To check the authenticity of testing /inspection report & certificate, please contact us at telephone: (86-755) 8307 1443, or email: CN.Doccheck@sgs.com**

Sample photo:



SGS authenticate the photo on original report only

\*\*\* End of Report \*\*\*